



浙江人禾电子 产品目录册

Zhejiang RHI Electric Co., Ltd.
Product catalogue



关于我们 About US

浙江人禾电子有限公司是中国铜排和铝排制造领先企业，拥有超 30,000 m² 现代化厂房，专注新能源电池连接方案。

企业引入自动化生产线，配备 CCD 自动化检测设备，实施多阶段质量控制流程，确保产品严格符合国际质量标准。企业已通过 IATF16949、ISO14001 和 ISO45001 等认证，产品满足 RoHS、REACH 和 UL94V-0 等标准要求。

为契合新能源行业快速发展的技术需求，企业积极推进数字化转型，引入 ERP、PLM 和 MES 系统，全面提升母排制造效率与管理水平，持续引领行业发展。

Zhejiang RHI Electric Co., Ltd. is a leading Chinese manufacturer of copper and aluminum busbars, with 30,000 m² of modern facilities, specializing in new energy battery connections.

RHI has automated production lines and CCD inspection gear, with multi - stage quality control. It's certified under IATF 16949, ISO 14001, ISO 45001, and its products meet RoHS, REACH, UL 94V - 0 standards.

To meet new energy's growing tech needs, RHI promotes digital transformation via ERP, PLM, MES systems, boosting efficiency and management, and leading industry development.

发展历程

Development history



2010

企业前身 Early Stage

位于白鹭屿村，占地90㎡。

Began production of PVC dipping products in a 90m² facility.



2011

人禾成立 RHI Founded

成立“乐清市人禾电子有限公司”，专注为五金、家电和汽车行业提供PVC配套产品。

"Yueqing RHI Electric Co., Ltd." established, focusing on PVC supporting products.



2013

拓展国际业务 Oversea Markets

迁址东蒙工业区，设立外贸事业部，拓展国际市场。

Moved to Dongmeng Industrial Zone, setting up export division to expand internationally.



2016

新能源转型 New Energy Industry

战略转型至新能源连接系统，迁至温州大桥工业区（4000㎡），更名为“浙江人禾电子有限公司”。

Relocated to Wenzhou Daqiao Industrial Zone (4,000m²), renamed "Zhejiang RHI Electric Co., Ltd.", with a shift to new energy connection systems.



2018

扩张与创新 Expansion & Innovation

搬迁至象阳工业区（7500㎡），引入自动化生产线，服务新能源主机厂。

Moved to Xiangyang Industrial Zone (7,500m²), introduced automated production lines for new energy OEMs.



2020

一级供应商 Tier 1 Supplier

投产挤塑生产线，成为雷诺、一汽、小鹏汽车合格供应商。

Commissioned extrusion production line, became a qualified supplier for Renault, FAW, and Xpeng Motors.

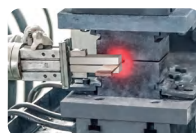


2021

持续扩产发展 Continuous Progresses

盐盘工厂投产，生产面积扩至20000㎡，引入MES系统，实现生产物料全程可追溯。

Saltpan factory launched, expanding to 20,000m² and implementing MES systems for full material traceability.



2022

智造升级 Smart Upgrade

加速自动化、数字化升级，成为宁德时代合格供应商。

Accelerated automation and digital upgrades, became a qualified supplier for CATL.



2025

持续扩产升级 Continuous Expansion

一厂迁址，厂房总面积超30,000㎡，产能制造升级。

Factory relocated, 30,000m² + area, upgraded capacity and manufacturing.

目录

Contents

01 / 硬排系列
Rigid Busbars

09 / 软排系列
Flexible Busbar

13 / 铝巴系列
Aluminum Busbars

14 / 注塑系列
Injection Molding Busbars

16 / 铜排护套系列
Copper Busbar Covers

17 / 耐高温系列
High-temperature Resistant Solutions

18 / 轻量化方案
Cost Optimizing Solutions

19 / 研发能力
R&D Capabilities

20 / 实验设备
Experimental equipment

21 / 制造实力
Manufacturing Capability

23 / 企业证书
Enterprise certificate

24 / 合作伙伴
Partners

硬排系列

Rigid Busbars

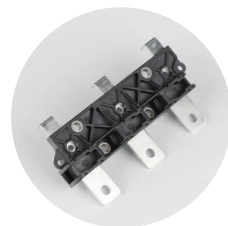


硬排系列主要有冲压硬排、3D 硬排和 3D 挤塑硬排等。其导体材质以铜、铝为主，绝缘材质常用 PE/PVC/PA12/EP/PI 等。

Busbars Types: Stamped busbars, 3D busbars, 3D-extruded busbars, etc.

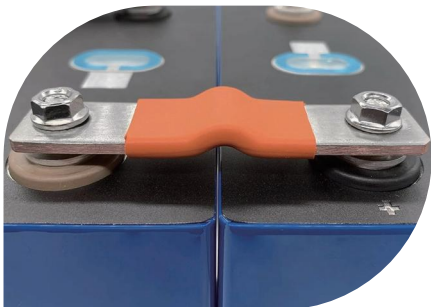
Main Materials: Copper/Aluminum are mainly used.

Insulating Materials: PE/PVC/PA12/EP/PI, etc.



硬排优势

Advantages of Rigid Busbars



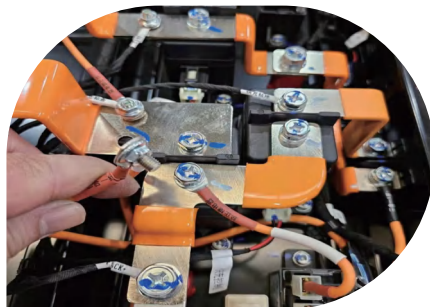
电气性能 Electrical Performance

载流能力强: 硬排多选用高导电率的纯铜、铝材质，横截面积大，能在高功率电池模组中承载大电流，实现高效输电并降低能耗。

电阻低: 相较软排，硬排在同等电流下电阻更低、产热少，可提升电池模组整体效率，减轻散热负担。

High Current Capacity: Made of high-conductivity copper or aluminum, rigid busbars have large cross-sections, allowing for efficient power transmission with low energy loss in high-power scenarios.

Low Resistance: Rigid busbars have lower resistance and generate less heat compared to flexible busbars, improving overall efficiency and reducing cooling demands.



机械性能 Mechanical Performance

刚性好: 硬排刚性佳，在电池模组中能维持形状，抗振动、冲击，避免连接松动造成接触不良。

安装便捷: 其形状、尺寸固定，便于标准化安装，可提高生产效率。

Rigidity: Rigid busbars maintain shape, resist vibration, and minimize contact issues caused by loosening.

Easy Installation: Fixed dimensions allow for standardized, efficient installation.



稳定性 Stability

抗环境干扰: 硬排受温度、湿度等环境因素影响小，材质和结构能抗氧化、腐蚀，保证长期稳定运行。

可靠性高: 硬排连接点固定，减少连接松动故障风险，在电池模组全生命周期内提供可靠电气连接，降低维护成本。

Environmental Resistance: Rigid busbars are resistant to oxidation, corrosion, and environmental factors like temperature and humidity, ensuring long-term reliability.

High Reliability: Fixed connections reduce the risk of loosening, providing stable electrical performance throughout the battery module's lifecycle and lowering maintenance costs.



挤塑硬排

Extruded Rigid Busbars

挤塑硬排是一种通过挤压工艺制造的铜 / 铝材料产品。

Extruded rigid busbars are copper/aluminum products manufactured through an extrusion process.

产品材质：T2 紫铜 / 铝

Material: T2 copper/aluminum

产品优点：绝缘、耐磨性好、良好的抗震和抗冲击性、多维成型，节省空间。

Advantages: Good insulation and abrasion resistance, excellent anti-seismic and anti-shock performance, multidimensional molding to save space.



PA12挤塑铜排
PA12 Extruded Copper Bar



PVC挤塑铜排
PVC Extruded Copper Bar



激光去皮
Laser Peeling

厚度 Thickness	绝缘材质 Insulating material	耐压 Withstand voltage	耐温 Temperature resistance
0.4-0.8mm	PA12	2700V	150℃
0.5-2mm	PVC	3500V	-40-125℃



浸塑硬排

PVC Dipping Rigid Busbars

硬排表面包覆 PVC 绝缘材质，适用于较高安全性能的电气连接和传输场合。

Insulated with PVC Dipping layer, insulation material, fit for high security required applications like electrical connections & transmission.

产品材质：T2 紫铜 / 铝

Material: T2 copper/aluminum

表面处理：镀锡、镀镍、镀银

Surface treatment: Tin Plating, Nickel Plating, Silver Plating

产品优点：良好的绝缘性能、耐腐蚀、外观平整具有较好的美观性，应用广泛。

Advantages: Good insulation performance, corrosion resistance, smooth appearance with good aesthetics, widely used.

厚度 Thickness	绝缘材质 Insulating material	耐压 Withstand voltage	耐温 Temperature resistance
0.8-2mm	PVC	3500V	-40-125℃



3D折弯硬排

CNC Bending Rigid Busbars

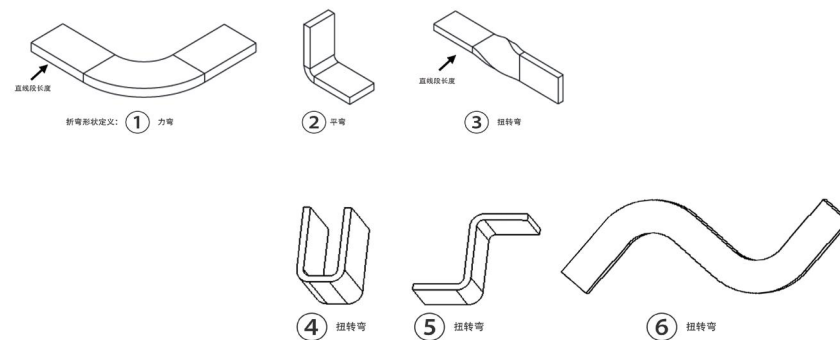
硬排通过特定的加工工艺，按照设计要求进行三维形状的折弯加工。
Busbars could be bented into various angles by CNC bending process in accordance with client drawing.

产品材质：T2 紫铜 / 铝

Material: T2 copper/aluminum

产品优点：自动化，精确度高，可满足各类角度定制。

Advantages: Automation, high accuracy, can meet all kinds of Angle customization.



厚度 Thickness	宽度 Breadth	轴数 Number of axes	折弯系数 Bending coefficient
1.0-5.0mm	10-25mm	6	0.8



热缩硬排

Heat Shrink Rigid Copper Busbars

热缩绝缘套管能够提供良好的绝缘保护，增加母排的机械强度和抗震性能。
Heat shrink insulation tubes provide excellent insulation protection, enhancing the mechanical strength and vibration resistance of busbars.

产品材质：T2 紫铜 / 铝
Material: T2 copper/aluminum

表面处理：镀锡、镀镍、镀银
Surface treatment: Tin Plating, Nickel plating, Silver Plating

EVA 绝缘因柔韧性和耐候性出色，多用于低电压系统；而 PE 绝缘凭借高机械强度和硬度，更适合应用于需承受较大机械应力的场合。
EVA insulation features flexibility and weather resistance, suited for low-voltage systems. PE insulation, with high strength and hardness, is ideal for high-stress applications.

优点：成型速度快、易于安装、能够有效提高连接系统的安全性和可靠性。
Advantages: Fast to mold, easy to install, effectively improving the safety and reliability of the connection system.

厚度 Thickness	绝缘材质 Insulating material	耐压 Withstand voltage	耐温 Temperature resistance
1.0-1.5mm	EVA	3500V	-55-125℃
	PE	1000V	-55-105℃



浸粉硬排

Epoxy Powder Coating Rigid Busbars

硬排表面涂覆一层环氧树脂（EP）的绝缘材料，提高母排的绝缘性能，防止短路。

Coated with epoxy resin (EP) insulation material to enhance the insulation performance of busbars and prevent short circuits.

产品材质: T2紫铜/铝

Material: T2 copper/aluminum

表面处理: 镀锡、镀镍、镀银

Surface treatment: Tin plating, Nickel plating, Silver plating

产品优点: 涂层附着力好，表面平整美观

防潮、绝缘性好、耐高低温

适用于异型及不同规格母排，节省空间

Advantages: Excellent adhesion, neat and clean surface

Good moisture resistance and insulation

High and low temperature resistance

Suitable for irregular shape and busbars of all specifications, space-saving.

厚度 Thickness	绝缘材质 Insulating material	介电强度 Dielectric strenggth	耐压 Withstand voltage	耐温 Temperature resistance
0.4-0.8mm	Epoxy	20KV/mm	5000V	150℃



PI硬排

PI Rigid Busbars

PI(聚酯亚胺) 是一种高性能工程塑料，硬排表面包覆该材料通常可用于电子、航空航天、汽车等领域，厚度一般为 0.15-0.25mm。

PI (Polyimide) is a high-performance engineering plastic that is commonly used for rigid surface coating in fields such as electronics, aerospace, and automotive, typically with a thickness of 0.15-0.25mm.

产品特点

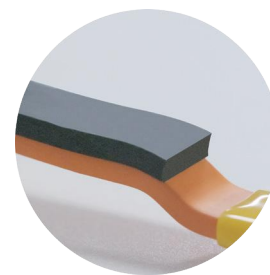
- 在 280°C 下有足够高的抗拉强度和弯曲模量
- PI具有较轻的重量，适用于对重量较严格的应用场合
- 具有优秀的耐压性能，优秀的绝缘电阻能力

Features

- High enough tensile strength and bending modulus at 280°C
- Light material weight and suitable for applications with stricter weight requirements
- Excellent voltage withstand and excellent insulation resistance

产品可带配件 (扎带/标签/激光打标/贴防撞泡棉等)

Components are available (cable ties/labels/laser marking/anti-collision foam, etc.)



软排系列

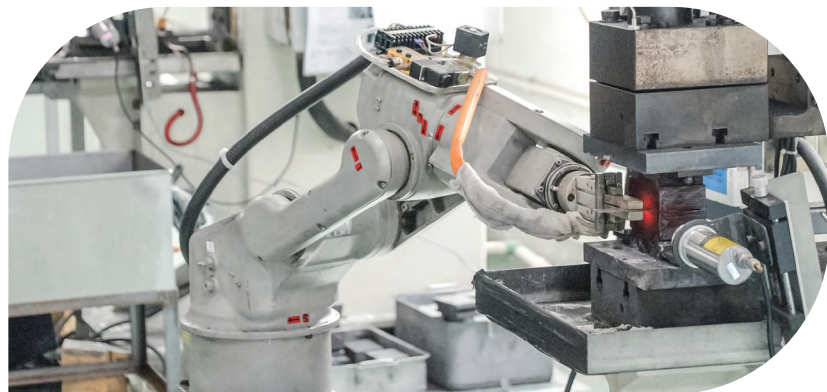
Flexible Busbars

软排分为软连接和柔性母排，软连接更注重柔软性和导电性能，适用于特定的连接需求；柔性母排则更注重灵活性和绝缘性能，适用于弯曲连接和复杂布局，导体材质为铜箔或铝箔。

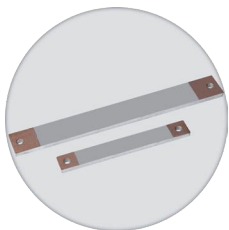
Flexible busbars can be divided into flexible busbars with welding & flexible busbars without welding. Welded ones focus more on flexibility and conductivity, making it suitable for specific connection needs; Unwelded ones fit better for bending connections and complex layouts, Materials for both types could be copper or aluminum.



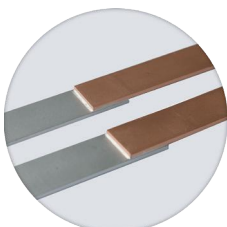
● 高分子焊接设备 Polymer diffusion welding equipments



● 自动化焊接设备 Automated welding equipment



对焊
Butt welding



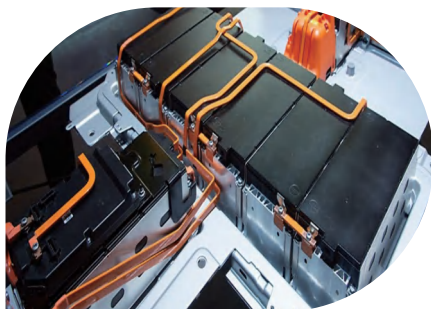
叠焊
Lap welding



摩擦焊
Friction welding

软排优势

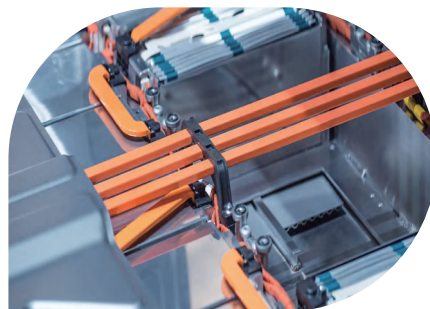
Advantages of Flexible Busbars



高柔韧性 High Flexibility

耐挤压、耐弯曲、抗冲击，可手动弯折，适应设备振动和复杂安装环境，并具备应力补偿能力。

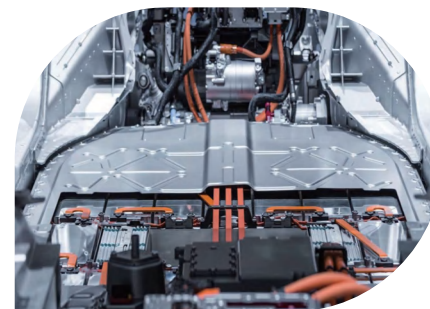
Resistant to compression, bending, and impact. Manually bendable, adapts to vibrations and complex installations, with stress compensation capability.



安装便利 Easy Installation

截面小、弯折灵活，便于布线安装，能补偿设备安装误差，具备减震缓冲功能。在电力连接中，可适应位置偏差与震动。

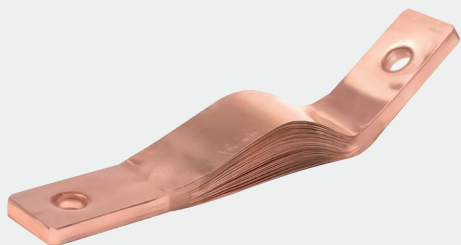
Small cross-section and flexible bending for convenient wiring. Compensates for installation errors and absorbs vibrations, ensuring reliability in power connections.



电气性能 Electrical Performance

低电阻率，高导电性，降低能耗，提高能效。耐腐蚀、抗氧化、散热快，确保长期稳定运行，减少维护成本。

Low resistivity and high conductivity cut energy loss, boost efficiency. Resistant to corrosion, oxidation, and with fast heat dissipation, it ensures long - term stable operation with little maintenance.



软连接
Flexible busbars



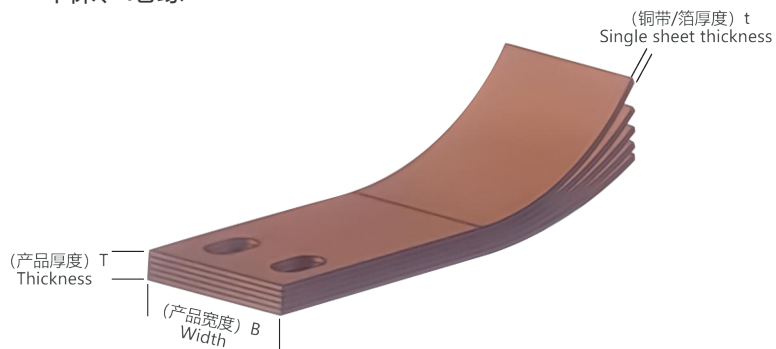
浸塑软排
PVC dipping busbars



热缩软排
Heat shrink flexible busbars

产品特点

- 材料：铜（铝）带/箔
- 良好的导电性、柔韧性、散热性、抗震性
- 安装适配性强
- 表面处理有贴铜银（镍）片、镀锡、镀银等多种方案
- 绝缘处理有套热缩管、浸塑等工艺，具备耐高低温、环保、绝缘



Features

- Material: Cu/Al strip or foil
- Excellent electrical conductivity, flexibility, heat dissipation and vibration resistance
- High installation adaptability
- Surface treatment: nickel laminate, tin plating, silver plating, etc.
- Insulation material: Polyene hydrogen heat shrink tubing is used for insulation, which is resistant to high and low temperatures, environmentally friendly, and insulated

材质 Material	层厚 Single Sheet thickness (t)	产品宽度 Width(B)									产品厚度 Thickness(T)
T2M铜带 Cu strip	0.1	13	14	15	16	17	18	20	23	25	1~10
铝带 Al strip	0.2	18	22	28	30	35	40	45	48	60	1~10



柔性母排

Flexible Busbar

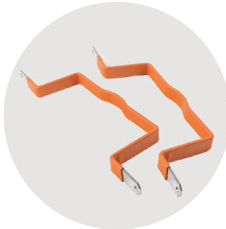
是一种灵活、可弯曲且具有导电性能的排线组件。
An electrical conductive conductor, integrated with electrical conductivity, insulation and high deflection.

产品特点

- 导体采用铜或铝带，滑动自如，柔性与弯曲性优异
- 具有良好的绝缘性能，有效防止短路
- 可定制以满足高效连接与灵活布局需求

Features

- The conductor uses copper or aluminum tape, ensuring flexibility and smooth sliding
- Good insulation performance, prevents short circuits efficiently
- Customizable for efficient connections and flexible layouts



参数名称 Parameter	铜导电率 Copper conductivity	绝缘材质 Insulating material	介电强度 Dielectric strength	工作温度 Operating temperature	工作电压 Operating voltage	阻燃等级 Flame retardant rating	环保 Environmental protection
参数值 Values	≥57MS/m	PVC	20KV/mm	-40℃~105℃	DC 1500V	UL94-V0	RoHS

铝巴系列

Aluminum Busbars

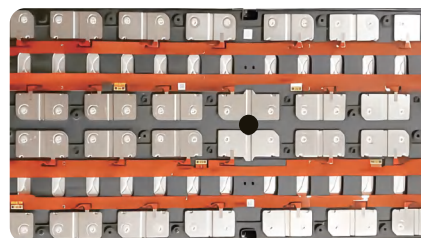
广泛用于电动汽车和储能系统的电池模组，连接电池单体以构成电池组。其导电性优良、重量轻，有助于提升电池能量密度并降低成本。 Widely used in EV and energy storage battery modules, connecting cells to form a pack. They provide good conductivity, reduce weight, and lower costs, improving energy efficiency.

产品特点

- 重量轻
- 导电性能好
- 散热快
- 可定制型强

Features

- Light weight
- Good conductivity
- Quick heat dissipation
- High customizability

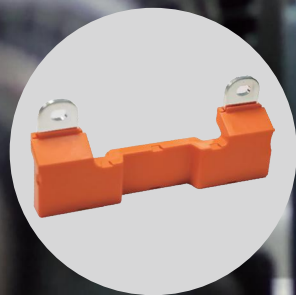


注塑系列

Injection Molding Busbars

通过注塑工艺将母排材料注入模具中，经过加热和压力成型，制成具有特定形状和尺寸的产品。

The raw material is injected into the mold through the injection molding process, and then molded under heat and pressure.



产品特点

- 精密度高，可制造各类复杂形状
- 实现批量生产，提高生产效率，节省生产时间和成本
- 表面光滑平整无气泡瑕疵，具有良好的外观质量
- 材料利用率高，具有较高的设计灵活性

Features

- High precision, capable of manufacturing various complex shapes
- Realize mass production, improve production efficiency, save production time and costs
- Smooth and flat surface without bubble defects, with good appearance quality
- High material utilization and high design flexibility

性能参数 Performance Parameter

参数名称 Parameter name	参数值 Parameter valve
抗老化 Ageing-resistant	158°C/168小时 (h)
防火等级 Fire-retardant rating	AC 1000V
ROHS	符合质量 Qualified
防护等级 Protection level	UL94V-0
工作温度 Working temperature	-40~105°C/125°C/180°C
绝缘材料 Insulation material	PA66/PA6T/PPS
导体材料 Conductor material	T2铜/铝 T2 Copper/Aluminum

铜排护套系列

Copper Busbar Covers

保护铜排免受机械损伤、化学腐蚀、以及跟其他金属接触。

Protect the copper busbar from mechanical damage,
chemical corrosion, and contact with other metals.

性能参数 Performance Parameter		
测试项目 (Item)	测定值 (Value)	单位(Unit)
引张硬度 Extension Hardness	150	kg/cm ²
伸张率 Elongation	302	%
引裂强度 Tear Strength	17.5	Mpa
耐压要求 Voltage	DC、3000V、60s	<1mA
绝缘要求 Insulation	DC、1000V、60s	>1000MΩ
耐热冲击 Thermal shock resistance	UL224 250℃ × 4hr	不龟裂/不粘贴 (No cracks/No paste)
热老化后拉伸强度 Tensile strength after thermal aged	UL224 158℃ × 168hr	>7.3Mpa
耐油性 (抗张力惨率) Oil Resistivity	90	%
环保等级 ECO Grade	ROHS/REACH	-



● 独立式保护套
Individual Covers



● 连体式保护套
One-piece Covers



● 线缆式包含套
Cable End Covers

耐高温系列

High-temperature Resistant Solutions

采用复合云母带、陶瓷复合带或陶瓷化硅橡胶复合带作为耐高温层，以满足 EV 动力系统对耐高温、绝缘性及机械强度的严格要求。

经 1000°C 火焰燃烧 10 分钟测试，产品耐压 3500V DC/60s，漏电流 < 1mA，绝缘性能 1000V DC/60s，绝缘电阻 > 500MΩ。

产品分为硬排与软排：软排结合柔性母排与复合带或陶瓷复合带，硬排采用云母带包覆并经 PVC 浸塑处理。

The high-temp-resistant layer uses composite mica, ceramic composite or ceramifiable silicone rubber tapes for EV power systems' heat resistance, insulation and strength.

In a 10-minute 1000°C flame test, it withstands 3500V DC/60s (leakage current < 1mA), and has 1000V DC/60s insulation performance (insulation resistance > 500MΩ).

Available in rigid and flexible types. Flexible busbars combine laminated structures with composite tapes; rigid busbars have mica wrapping and PVC dip coating.

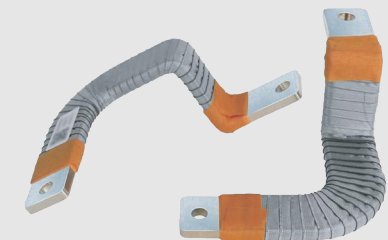
自动化缠绕机精准控制张力和角度，将复合带均匀紧密地缠绕在母排上，防止松动，提升效率。

An automatic winding machine precisely controls tension and angle to tightly and evenly wrap composite tape around busbars, preventing loosening and enhancing efficiency.

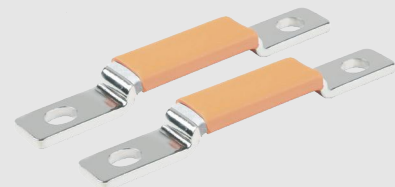


自动缠绕车间
Automatic winding shop

- 外缠云母带产品
Mica Tape Outside Products



- 陶瓷复合带产品
Ceramic Composite Tape Products



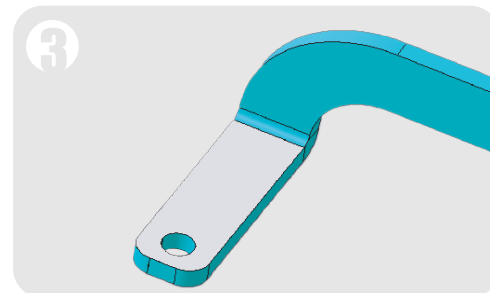
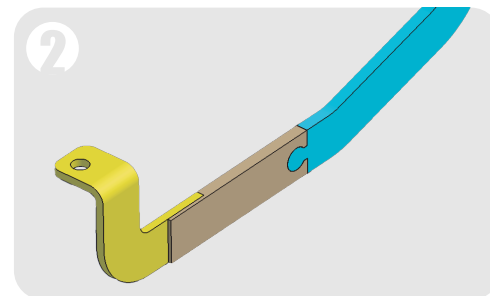
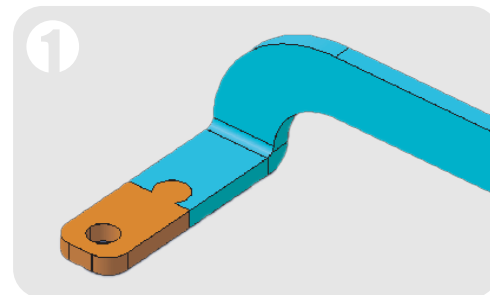
- 内缠云母带产品
Mica Tape Inside Products

轻量化方案

Cost Optimizing Solutions

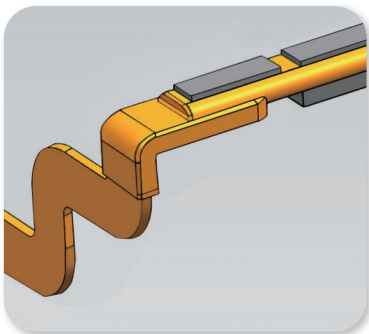
1. **优化设计**：优化设计减少不必要的结构冗余和材料使用，以达到轻量化的目的。
2. **材料替代**：使用密度较低但具有良好导电性能的材料替代部分铜排，降低整体重量而不影响电气性能。
3. **空心结构**：考虑采用空心结构设计，减少材料使用同时保持强度和导电性能。
4. **采用高强度材料**：使用强度高的材料制造铜排，减少材料厚度，达到轻量化的效果。
5. **结构优化**：对铜排的结构进行优化设计，减少材料浪费和冗余，提高材料利用率。

1. **Optimized Design**: Eliminating unnecessary structural redundancy and material usage to achieve lightweight objectives.
2. **Material Substitution**: Substituting copper with materials of lower density but good conductivity to reduce overall weight without compromising electrical performance.
3. **Hollow Structure**: Considering the use of hollow structural design to reduce material usage while maintaining strength and conductivity.
4. **Use of High-Strength Materials**: Manufacturing copper busbars using high-strength materials to reduce material thickness and achieve lightweight effects.
5. **Structural Optimization**: Optimizing the structure of copper busbars to minimize material waste and redundancy, thereby improving material utilization.

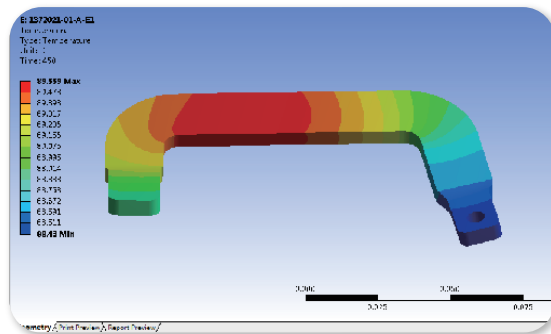


研发能力

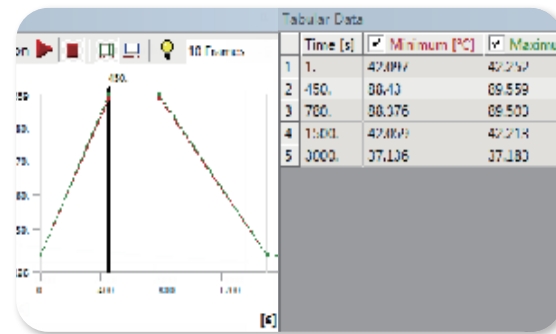
R&D Capabilities



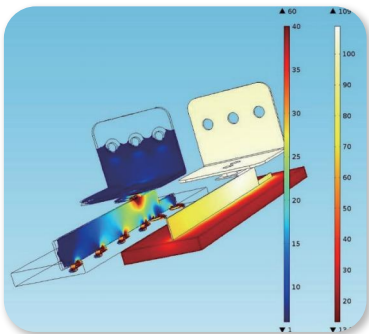
三维结构设计
3D Structural Design



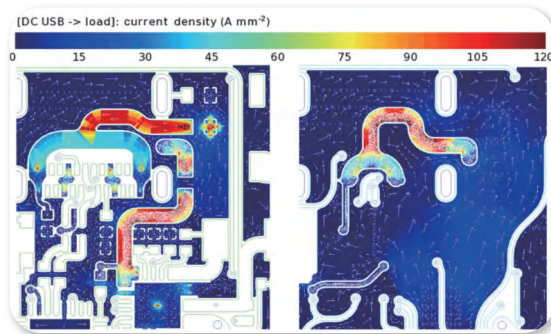
电热仿真
Electrothermal Simulation



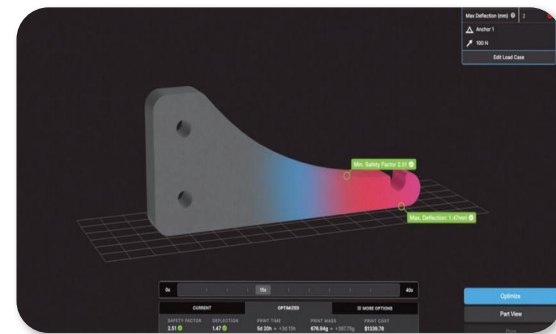
散热分析
Heat Dissipation Analysis



模流分析
Mode Flow Analysis



电流密度模拟仿真
Current Density Simulation



电力负荷仿真
Current Load Simulation

实验设备

Experimental equipment



三坐标测量仪
Coordinate measuring machine



金相测试仪
Metallographic Tester



盐雾试验机
Salt Spray Tester



冷热冲击试验箱
Thermal Shock Test Chamber



温度冲击箱
Temperature Shock Chamber



恒温恒湿试验箱
Constant T&H Test Chamber



影像测量仪
Video Measuring Instrument



多功能电解测厚仪
Multi-Electrolytic Thickness Meter



线材弯折试验机
Wire Bending Tester



电阻测试仪
Resistance Tester



漏电起痕试验机
Leakage Tracking Tester



显微硬度计
Microhardness Tester

制造实力

Manufacturing Capability



自动化焊接车间

Automated Welding Workshop

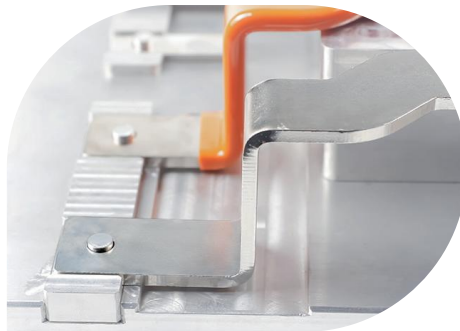
拥有超 30 台高分子焊接设备
配备多条产线，适配不同焊接材质
自动化焊接，稳定运行，确保质量
为软排焊接、铜铝及软硬复合母排
制造提供保障

Over 30 polymer welding machines

Multiple production lines for various materials

Automated welding ensures stability and quality

Reliable for flexible, copper-aluminum, and hybrid
busbar welding



模具开发中心

Mold Development Center

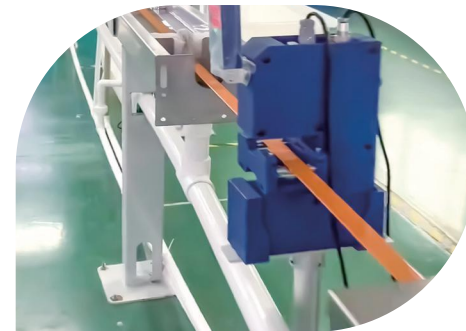
适配电力连接需求
提升交付时效
增强产品一致性
定制新能源方案

Optimized Electrical Connections

Enhanced Delivery Efficiency

Improved Product Consistency

Custom New Energy Busbar Solutions



自动化挤塑车间

Automated Extrusion Workshop

四条独立标准自动化挤塑生产线
高效生产，实现批量化与一致性
严格的生产流程与质量控制

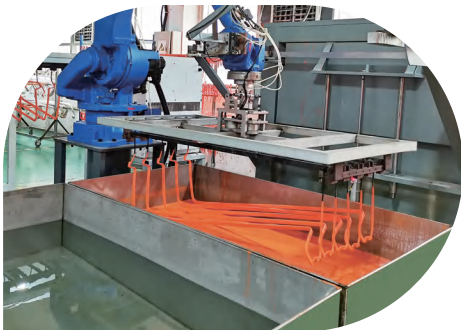
Four Automated Extrusion Lines

Efficient, Scalable, and Consistent Production

Strict Process and Quality Control

制造实力

Manufacturing Capability



自动化浸塑车间

Automated Dipping Workshop

十余年浸塑工艺经验，独特 PVC 绝缘塑胶配方与成熟工艺控制。配备多条自动化生产线，确保产品光滑美观，可独立完成铜排浸塑加工。

Over 10 years of dipping experience with unique PVC insulation formulation and mature process control.

Multiple automated production lines ensure smooth, glossy finishes and independent copper bar coating.



自动 3D 折弯车间

3D Bending Workshop

配备数台 3D 自动折弯机和弹簧机，高效精准完成各类折弯。

Equipped with several 3D automatic bending machines and spring machines to efficiently and precisely complete various bending tasks.



CCD 自动检测

CCD Automated Inspection

采用 CCD 自动检测与多阶段质控，确保铜排尺寸精确、绝缘性能稳定。严格执行行业标准，优化工艺，实现全流程质量追溯。人禾凭卓越品控获多家主机厂免检认可。

Utilizing CCD inspection and multi-stage quality control for precision and insulation stability. Adhering to industry standards and ensuring full-process traceability, RHI busbars are OEM-certified for exemption.

企业证书

Enterprise certificate



合作伙伴

Partners

本着互惠互利合作共赢的商业原则，我们对以下全球著名公司的合作伙伴感到自豪。
Following the principle of mutual benefit, we take pride in our partnerships with these global leading companies.

主机厂客户

OEM Customers



以上公司排名不分先后。
Companies are listed in no particular order.

三电系统客户

E-Powertrain Customers

CATL
宁德时代

CALB

VREMT

SVOLT
蜂巢能源

SUNWODA
欣旺达

 **Envision**
远景动力

其他客户

Other Partners

Trinasolar
天合光能

EP中力
搬运绿色, 提升未来

NOBLIFT
SHANGHAI Noblir Machinery Co., Ltd.
诺力机械

以上公司排名不分先后。

Companies are listed in no particular order.



www.rhibusbar.com



www.rhielectric.com

ZHE JIANG RHI ELECTRIC CO.,LTD.
浙江人禾电子有限公司

地址：浙江省乐清市柳市镇象阳工业区德美路1号 邮编：325604

Add: No.1 Demei Road, Xiangyang Industrial Zone, Liushi Town, Yueqing, Zhejiang, China, Post Code 325604

Tel: 86-577-61988777

Fax: 86-577-61988711

E-mail: sales@rhielec.com

Website: www.rhielec.com